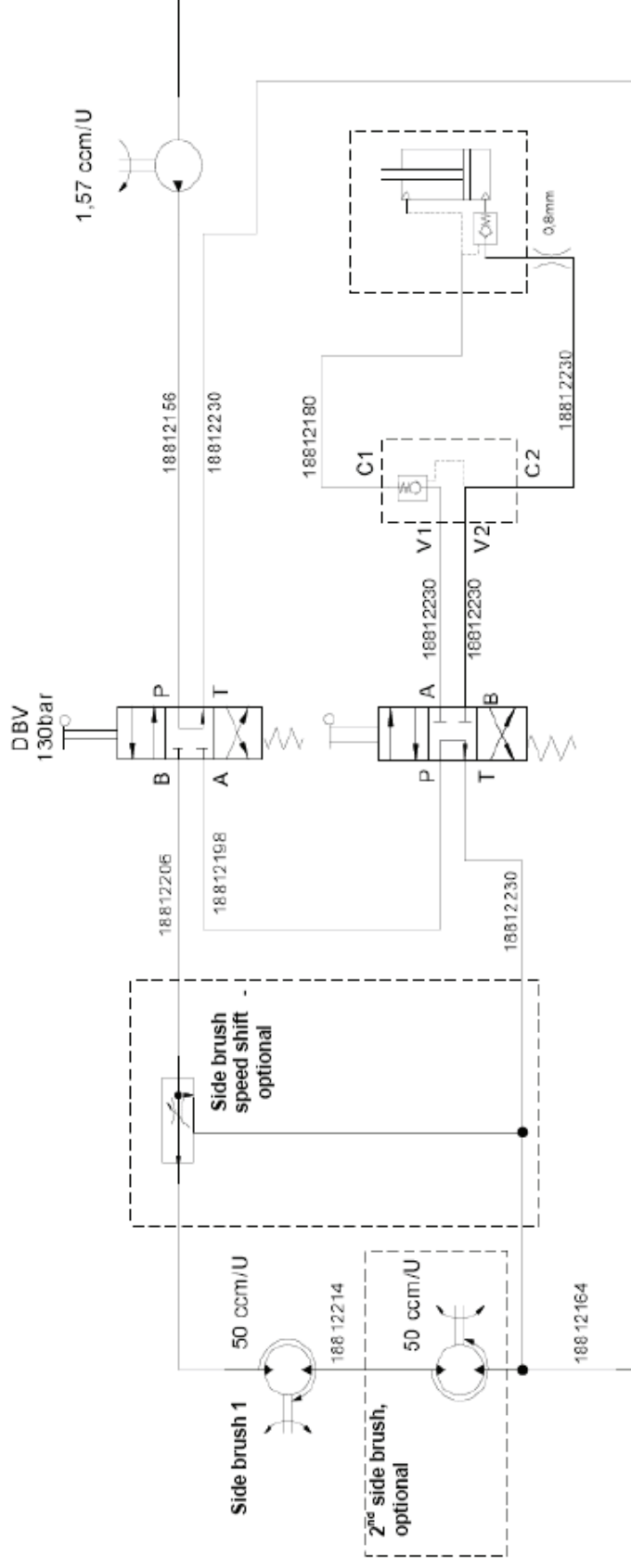


5.3 Brief Description of Work Hydraulic

Work hydraulic is responsible for supply of the side brushes and the lifting cylinder of the hopper lift-out system.



A gear pump (driven by V-belt) delivers hydraulic fluid from the tank to the combined control valve. As long as no specific function is set, the fluid flows back into the tank. For operation of side brush, the "upper" partial valve is shifted downwards by actuation of the side brush lever to allow the fluid flowing to the side brush motors for driving them. For emptying of the dirt hopper, a safety circuit (two-hand operation) is provided for which the "upper" partial valve has to be switched upwards by the broom cylinder operating lever while, simultaneously, the hopper lever allows switching of the "lower" partial valve upwards. Then the fluid flows from the pump through the "upper" to the "lower" and then to the piston side of the lifting cylinder. The hopper is then lifted-out. For lowering, actuation of the hopper lever to the other side (valve switched downwards) is sufficient.